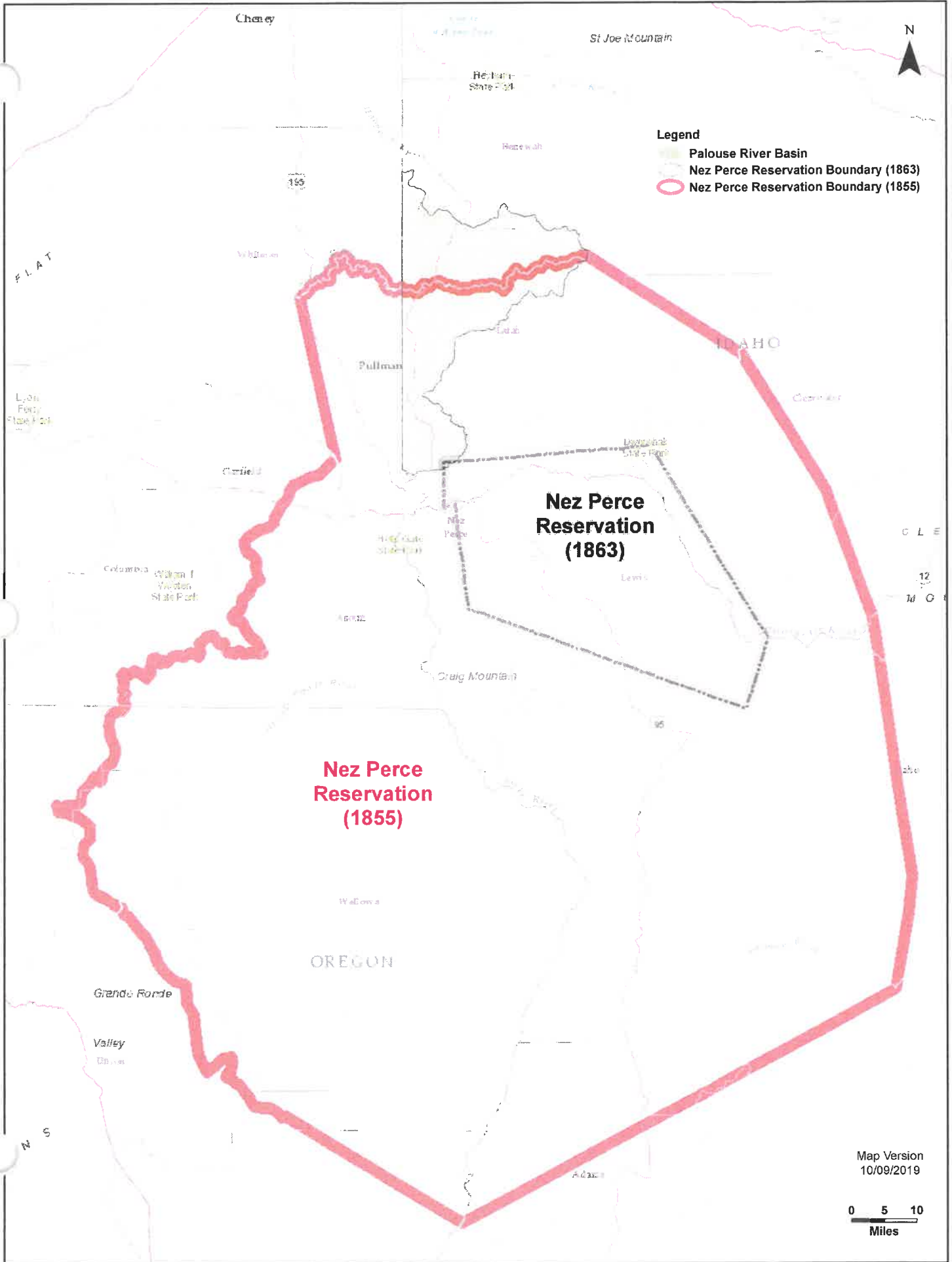


## **List of Attachments**

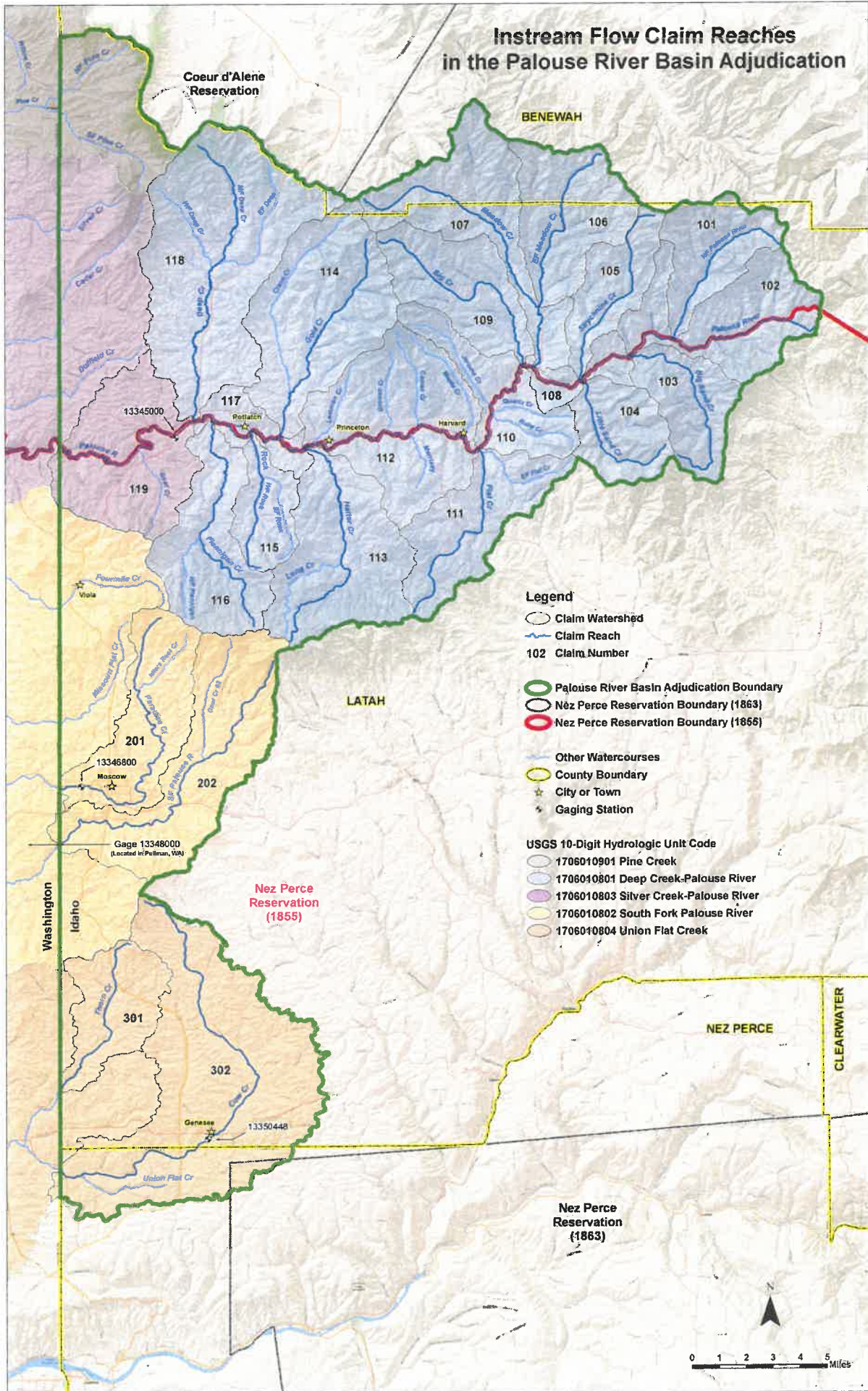
- Attachment A: Map of Palouse River Basin and Nez Perce Tribe Reservation boundaries.
- Attachment I: United States table providing a summary of the monthly instream flow claims for each stream reach.
- Attachment II: United States map of instream flow claims.
- Attachment III: United States table providing a summary of springs and fountains claims.
- Attachments IV: United States map of locations of springs and fountains claims.
- Attachment V: United States map of the locations of domestic and stockwater claims on two allotments located in the portion of the Reservation within Basin 87.
- Attachment VI: Nez Perce Tribe table providing a summary of the provisional springs and fountains claims.
- Attachment VII: Nez Perce Tribe map of locations of provisional springs and fountains claims.

Attachment A to U.S. Cover Letter, dated December 27, 2019



**Summary of Federal Instream Flow Claims in cubic feet per second (cfs)  
Attachment I to U.S. Cover Letter, dated December 27, 2019**

Stream Name	Claim #	JAN	FEB	MAR	APR	MAY	JUN	JUL	AUG	SEP	OCT	NOV	DEC
North Fork Palouse River	101	12	68	72	36	16	12	4.8	3.4	2.7	2.9	5.9	4.7
Palouse River Reach	102	36	162	186	113	43	24	8.6	5.1	4.3	5.2	12	13
Big Sand Creek	103	12	51	54	25	10	6.5	2.9	2.1	1.7	1.8	3.9	3.9
Little Sand Creek	104	11	38	41	18	9.9	6.6	2.9	2.2	1.8	1.9	3.9	3.6
Strychnine Creek	105	11	39	41	18	6.4	3.9	1.8	1.4	1.2	1.2	2.7	3.1
East Fork Meadow Creek	106	21	57	64	31	11	5.9	2.6	1.8	1.5	1.8	4.1	5.9
Meadow Creek	107	52	120	145	84	35	16	5.9	3.4	3	3.9	9.7	16
Palouse River Reach	108	147	422	543	415	186	78	23	11	9.6	14	37	56
Big Creek	109	37	57	82	74	35	10	2.3	0.61	0.54	1.3	4.9	12
Palouse River Reach	110	197	497	655	521	225	87	25	11	10	15	42	72
Flat Creek	111	23	37	43	19	7.2	3.3	1.6	1.1	0.97	1.1	2.7	5.2
Palouse River Reach	112	281	551	750	618	282	99	28	12	11	17	49	99
Hatter Creek	113	31	46	67	60	28	8.7	2.2	0.88	0.82	1.4	4.3	10
Gold Creek	114	18	28	40	36	17	5.2	1.3	0.52	0.49	0.83	2.6	6.2
Rock Creek	115	10	13	15	5.4	2	1	0.56	0.47	0.41	0.43	1	2
Flannigan Creek	116	13	19	28	25	12	3.6	0.92	0.36	0.34	0.58	1.8	4.3
Palouse River	117	440	748	1060	937	421	134	35	14	13	22	67	152
Deep Creek	118	61	93	133	120	57	17	4.4	1.7	1.6	2.8	8.6	21
Palouse River Reach	119	573	799	1160	1050	508	151	39	15	14	24	76	193
Paradise Creek	201	19	28	33	16	6.7	3.2	0.91	0.69	0.67	1.3	3.3	5.9
South Fork Palouse River	202	19	35	39	15	7.6	4.7	1.9	1.7	2.1	2.2	3.5	6.2
Thorn Creek	301	7.2	25	19	6.9	1.9	0.81	0.21	0.04	0.15	0.24	0.63	1.5
Union Flat Creek	302	30	83	67	29	10	3.7	0.8	0.12	0.49	0.91	2.5	6.7



**Summary of Federal Spring(s) Claims**  
**Attachment III to U.S. Cover Letter, dated December 27, 2019**

<b>Claim No.</b>	<b>Multi-Source</b>	<b>Watershed</b>	<b>Source</b>	<b>Tributary To</b>	<b>Township</b>	<b>Range</b>	<b>Section</b>	<b>Q in the Q</b>	<b>Meridian</b>	<b>County</b>
1000	1000-1	Union Flat Creek	Spring	Thorn Creek	37N	5W	8	SENE	Boise	Latah
1001	1001-1	Union Flat Creek	Spring	Cow Creek	37N	5W	14	NENE	Boise	Latah
1002	1002-1	Union Flat Creek	Spring	Cow Creek	37N	5W	14	NENE	Boise	Latah
1003	1003-1	South Fork Palouse River	Spring	Fournmile Creek	41N	5W	32	NENE	Boise	Latah
1004	1004-1	South Fork Palouse River	Spring	Gnat Creek	40N	5W	23	NESE	Boise	Latah
1005	1005-1	South Fork Palouse River	Spring	Paradise Creek	40N	5W	22	NESE	Boise	Latah
1006	1006-1	South Fork Palouse River	Spring	South Fork Palouse River	39N	5W	29	SESE	Boise	Latah
1007	1007-1	Union Flat Creek	Spring	Cow Creek	37N	4W	17	NWSW	Boise	Latah
1008	1008-1	Deep Creek-Palouse River	Spring	Flannigan Creek	40N	5W	14	NENE	Boise	Latah
1009	1009-1	Deep Creek-Palouse River	Spring	Flannigan Creek	40N	5W	11	SWSE	Boise	Latah
1010	1010-1	South Fork Palouse River	Spring	Fournmile Creek	41N	6W	36	SWNE	Boise	Latah
1010	1010-2	South Fork Palouse River	Spring	Fournmile Creek	41N	6W	36	NESE	Boise	Latah
1011	1011-1	South Fork Palouse River	Spring	South Fork Palouse River	39N	5W	11	NENE	Boise	Latah
1012	1012-1	Silver Creek-Palouse River	Spring	Palouse River	41N	6W	13	NWNE	Boise	Latah

Claim No.	Multi-Source	Watershed	Source	Tributary To	Township	Range	Section	Q in the Q	Meridian	County
1013	1013-1	Deep Creek-Palouse River	Spring	Palouse River	41N	3W	19	NWSE	Boise	Latah
1014	1014-1	Deep Creek-Palouse River	Spring	West Fork Rock Creek	41N	5W	25	NESE	Boise	Latah
1015	1015-1	South Fork Palouse River	Spring	Fourmile Creek	40N	5W	8	NWNE	Boise	Latah
1016	1016-1	Union Flat Creek	Spring	Cow Creek	37N	4W	18	SWSW	Boise	Latah
1017	1017-1	Silver Creek-Palouse River	Spring	Palouse River	41N	5W	16	NWNW	Boise	Latah
1018	1018-1	Union Flat Creek	Spring	Cow Creek	37N	5W	16	SWSE	Boise	Latah
1019	1019-1	Deep Creek-Palouse River	Spring	West Fork Rock Creek	41N	4W	29	SESW	Boise	Latah
1019	1019-2	Deep Creek-Palouse River	Spring	East Fork Rock Creek	41N	4W	32	NENW	Boise	Latah
1019	1019-3	Deep Creek-Palouse River	Spring	East Fork Rock Creek	41N	4W	29	SESW	Boise	Latah
1020	1020-1	South Fork Palouse River	Spring	South Fork Palouse River	39N	5W	10	SWSW	Boise	Latah
1021	1021-1	South Fork Palouse River	Springs	Fourmile Creek	40N	5W	5	NWSW, NESW, SWSW, SESW, SWSE	Boise	Latah
1022	1022-1	Deep Creek-Palouse River	Spring	West Fork Rock Creek	41N	4W	31	NWSW	Boise	Latah
1023	1023-1	Deep Creek-Palouse River	Spring	West Fork Rock Creek	41N	4W	31	SWSE	Boise	Latah
1024	1024-1	Deep Creek-Palouse River	Spring	WF Rock Cr or Flannigan Cr	41N	4W	31	SESW	Boise	Latah
1025	1025-1	Deep Creek-Palouse River	Spring	WF Rock Cr or Flannigan Cr	41N	4W	31	SWSW	Boise	Latah

Claim No.	Multi-Source	Watershed	Source	Tributary To	Township	Range	Section	Q in the Q	Meridian	County
1026	1026-1	Deep Creek-Palouse River	Spring	Palouse River	41N	3W	17	NWSW, NESW, SWSW, SESW	Boise	Latah
1026	1026-2	Deep Creek-Palouse River	Spring	Palouse River or Flat Creek	41N	3W	20	NWNW, NENW, SWNW, SENW	Boise	Latah
1027	1027-1	South Fork Palouse River	Spring	Gnat Creek	40N	5W	24	NENW	Boise	Latah
1028	1028-1	Deep Creek-Palouse River	Spring	West Fork Flannigan Creek	41N	5W	33	SESE	Boise	Latah
1029	1029-1	Union Flat Creek	Spring	Thorn Creek	37N	5W	17	NENW	Boise	Latah
1029	1029-2	Union Flat Creek	Spring	Thorn Creek	37N	5W	17	NENW	Boise	Latah
1030	1030-1	Union Flat Creek	Spring	Thorn Creek	37N	5W	17	NWNE	Boise	Latah
1031	1031-1	Deep Creek-Palouse River	Spring	West Fork Rock Creek	41N	4W	19	NWSE	Boise	Latah
1032	1032-1	South Fork Palouse River	Spring	Missouri Flat or Paradise Cr	40N	5W	17	SESE	Boise	Latah
1033	1033-1	South Fork Palouse River	Spring	Missouri Flat or Paradise Cr	40N	5W	17	SESE	Boise	Latah
1034	1034-1	South Fork Palouse River	Spring	Missouri Flat Creek	40N	5W	20	NWNE	Boise	Latah
1035	1035-1	South Fork Palouse River	Springs	Gnat Cr or SF Palouse River	39N	5W	2	SWNE	Boise	Latah
1036	1036-1	South Fork Palouse River	Spring, Unnamed Stream	Gnat Creek	40N	5W	23	SESE	Boise	Latah
1036	1036-2	South Fork Palouse River	Spring, Unnamed Stream	Gnat Creek	40N	5W	23	SESE	Boise	Latah

Claim No.	Multi-Source	Watershed	Source	Tributary To	Township	Range	Section	Q in the Q	Meridian	County
1037	1037-1	Deep Creek-Palouse River	Spring	Flat Creek	41N	3W	28	SW/NW, NW/NE	Boise	Latah
1038	1038-1	South Fork Palouse River	Spring	Fourmile Creek	40N	5W	5	SWSE	Boise	Latah
1039	1039-1	South Fork Palouse River	Spring	Fourmile Creek	40N	5W	8	SENE	Boise	Latah
1040	1040-1	Union Flat Creek	Spring	Cow Creek	38N	4W	31	SWNW	Boise	Latah
1041	1041-1	Union Flat Creek	Spring	Cow Creek	38N	4W	30	NESW	Boise	Latah
1042	1042-1	Union Flat Creek	Spring	Cow Creek	38N	4W	31	SESW	Boise	Latah
1043	1043-1	Union Flat Creek	Spring Fed Pond	Cow Creek	38N	5W	24	NESW	Boise	Latah
1044	1044-1	Deep Creek-Palouse River	Spring	Flat Creek	41N	3W	28	NW/NW	Boise	Latah
1045	1045-1	Deep Creek-Palouse River	Spring	West Fork Rock Creek	41N	4W	31	NW/NE	Boise	Latah
1046	1046-1	Deep Creek-Palouse River	Spring	East Fork Rock Creek	41N	4W	20	SW/NW	Boise	Latah
1047	1047-1	South Fork Palouse River	Spring	Fourmile Creek	40N	5W	5	SENE	Boise	Latah
1048	1048-1	Union Flat Creek	Spring	Cow Creek	37N	5W	20	SENE	Boise	Nez Perce
1049	1049-1	Union Flat Creek	Spring	Cow Creek	38N	4W	30	SW/NW	Boise	Latah
1050	1050-1	Union Flat Creek	Spring	Union Flat Creek	37N	6W	25	SENE	Boise	Nez Perce
1051	1051-1	South Fork Palouse River	Spring	South Fork Palouse River	39N	5W	27	SENE	Boise	Latah
1052	1052-1	South Fork Palouse River	Spring	South Fork Palouse River	39N	5W	27	NENE	Boise	Latah



Claim No.	Multi-Source	Watershed	Source	Tributary To	Township	Range	Section	Q in the Q	Meridian	County
1053	1053-1	South Fork Palouse River	Spring	South Fork Palouse River	40N	4W	31	SENW	Boise	Latah
1054	1054-1	Union Flat Creek	Spring	Cow Creek	37N	5W	23	SWNE	Boise	Nez Perce
1055	1055-1	Deep Creek-Palouse River	Spring	Long Creek	40N	4W	8	SWNW	Boise	Latah
1056	1056-1	Union Flat Creek	Spring	Thorn Creek	37N	5W	18	SENW	Boise	Latah
1057	1057-1	Deep Creek-Palouse River	Spring Fed Pond	Palouse River	42N	3W	35	NESW	Boise	Latah
1058	1058-1	Deep Creek-Palouse River	Spring	Hatter Creek	41N	4W	28	NWSW	Boise	Latah
1059	1059-1	South Fork Palouse River	Spring	South Fork Palouse River	40N	4W	30	NESW	Boise	Latah
1060	1060-1	South Fork Palouse River	Spring	South Fork Palouse River	39N	5W	30	NESW	Boise	Latah
1061	1061-1	Deep Creek-Palouse River	Spring	Ruby Creek	41N	3W	10	NENE	Boise	Latah
1062	1062-1	Deep Creek-Palouse River	Spring	Flannigan Creek	41N	5W	14	SWSW	Boise	Latah
1063	1063-1	Deep Creek-Palouse River	Ground Water, Spring	Long Creek or Flannigan Creek	40N	4W	6	NESE	Boise	Latah
1064	1064-1	Deep Creek-Palouse River	Ground Water, Spring	Long Creek	40N	4W	5	SWNW	Boise	Latah
1065	1065-1	South Fork Palouse River	Ground Water, Spring	Idlers Rest Creek	40N	5W	15	SESE	Boise	Latah
1066	1066-1	South Fork Palouse River	Spring	Idlers Rest or Howard Cr	40N	5W	14	NWSW	Boise	Latah
1067	1067-1	Union Flat Creek	Spring	Thorn Creek	37N	5W	8	SENE	Boise	Latah

Claim No.	Multi-Source	Watershed	Source	Tributary To	Township	Range	Section	Q in the Q	Meridian	County
1068	1068-1	Deep Creek-Palouse River	Spring, Unnamed Spring	West Fork Rock Creek	41N	4W	30	SWNE	Boise	Latah
1068	1068-2	Deep Creek-Palouse River	Spring, Unnamed Spring	West Fork Rock Creek	41N	4W	30	SWNE	Boise	Latah
1068	1068-3	Deep Creek-Palouse River	Spring, Unnamed Spring	West Fork Rock Creek	41N	4W	30	NWSE	Boise	Latah
1068	1068-4	Deep Creek-Palouse River	Spring, Unnamed Spring	West Fork Rock Creek	41N	4W	30	NWSE	Boise	Latah
1068	1068-5	Deep Creek-Palouse River	Spring, Unnamed Spring	West Fork Rock Creek	41N	4W	30	NWSE	Boise	Latah
1069	1069-1	South Fork Palouse River	Spring	South Fork Palouse River	39N	5W	22	SWNW	Boise	Latah
1070	1070-1	South Fork Palouse River	Spring	South Fork Palouse River	38N	5W	5	NWNW	Boise	Latah
1071	1071-1	South Fork Palouse River	Spring, Fed Pond	South Fork Palouse River	39N	5W	22	SENW, SWNE, NESW, NWSE	Boise	Latah
1072	1072-1	South Fork Palouse River	Unnamed Spring	South Fork Palouse River	39N	5W	12	SWNE	Boise	Latah
1073	1073-1	South Fork Palouse River	Spring	Paradise Creek	40N	5W	31	NWSE	Boise	Latah
1074	1074-1	Deep Creek-Palouse River	Spring	West Fork Flannigan Creek	41N	5W	27	NESE	Boise	Latah
1075	1075-1	South Fork Palouse River	Spring, Fed Pond	Fourmile Creek	40N	5W	7	NWSW	Boise	Latah
1076	1076-1	South Fork Palouse River	Spring	Fourmile Creek	40N	5W	7	NWSE, SWSE, SESE	Boise	Latah
1077	1077-1	South Fork Palouse River	Spring	Idlers Rest Creek	40N	5W	15	SWSW	Boise	Latah

Claim No.	Multi-Source	Watershed	Source	Tributary To	Township	Range	Section	Q in the Q	Meridian	County
1078	1078-1	Silver Creek-Palouse River	Spring	Gnat Creek	41N	5W	21	SWSW	Boise	Latah
1079	1079-1	South Fork Palouse River	Spring	Howard Creek	40N	5W	26	NWSW	Boise	Latah
1080	1080-1	South Fork Palouse River	Spring	South Fork Palouse River	39N	5W	27	NESW	Boise	Latah
1081	1081-1	South Fork Palouse River	Spring	Fourmile Creek	40N	5W	10	SWNW	Boise	Latah
1082	1082-1	South Fork Palouse River	Spring	South Fork Palouse River	39N	5W	12	SWNE	Boise	Latah
1083	1083-1	Deep Creek-Palouse River	Springs	Flannigan Creek	41N	4W	31	SWSW	Boise	Latah
1083	1083-2	Deep Creek-Palouse River	Springs	West Fork Rock Creek	41N	4W	31	NWSW	Boise	Latah
1083	1083-3	Deep Creek-Palouse River	Springs	West Fork Rock Creek	41N	4W	31	SESW	Boise	Latah
1083	1083-4	Deep Creek-Palouse River	Springs	West Fork Rock Creek	41N	4W	31	SWSE	Boise	Latah
1084	1084-1	South Fork Palouse River	Spring	South Fork Palouse River	40N	4W	31	SENE	Boise	Latah
1085	1085-1	South Fork Palouse River	Spring	South Fork Palouse River	39N	5W	27	SENW	Boise	Latah
1086	1086-1	South Fork Palouse River	Spring	Missouri Flat Creek	40N	5W	8	SWSE	Boise	Latah
1087	1087-1	South Fork Palouse River	Spring	South Fork Palouse River	40N	4W	30	NESW	Boise	Latah
1088	1088-1	Union Flat Creek	Spring	Cow Creek	37N	5W	3	NWSW	Boise	Latah
1089	1089-1	Union Flat Creek	Spring	Cow Creek	37N	4W	20	SENW	Boise	Nez Perce
1090	1090-1	South Fork Palouse River	Spring	Crumarine Creek	40N	5W	25	NWSW	Boise	Latah

Claim No.	Multi-Source	Watershed	Source	Tributary To	Township	Range	Section	Q in the Q	Meridian	County
1091	1091-1	South Fork Palouse River	SPRINGS	Fournmile Creek	40N	5W	4	NWSW	Boise	Latah
1091	1091-2	South Fork Palouse River	SPRINGS	Fournmile Creek	40N	5W	4	SWSE	Boise	Latah
1091	1091-3	South Fork Palouse River	SPRINGS	Fournmile Creek	40N	5W	4	NWSW	Boise	Latah
1092	1092-1	South Fork Palouse River	SPRING	Paradise Creek	40N	5W	22	NENE	Boise	Latah
1093	1093-1	Silver Creek-Palouse River	SPRING	Gnat Creek	41N	5W	27	NENW	Boise	Latah
1094	1094-1	Silver Creek-Palouse River	SPRINGS	Gnat Creek	41N	5W	21	SWSW	Boise	Latah
1095	1095-1	South Fork Palouse River	SPRINGS	Crumarine Creek	40N	5W	25	NESW	Boise	Latah
1096	1096-1	South Fork Palouse River	SPRING	Fournmile Creek	41N	5W	29	SWSE	Boise	Latah
1097	1097-1	Deep Creek-Palouse River	SPRING	West Fork Rock Creek	41N	4W	31	SESW	Boise	Latah
1098	1098-1	Deep Creek-Palouse River	SPRINGS	West Fork Rock Creek	41N	4W	31	NENW	Boise	Latah
1098	1098-2	Deep Creek-Palouse River	SPRINGS	West Fork Rock Creek	41N	4W	31	NENW	Boise	Latah
1099	1099-1	South Fork Palouse River	SPRING	Gnat Creek	40N	5W	24	NWSW	Boise	Latah
1100	1100-1	South Fork Palouse River	SPRINGS	Gnat Creek	40N	5W	23	SENE	Boise	Latah
1100	1100-2	South Fork Palouse River	SPRINGS	Gnat Creek	40N	5W	23	SENE	Boise	Latah
1101	1101-1	South Fork Palouse River	SPRING	Idlers Rest Creek	40N	5W	28	NENE	Boise	Latah
1102	1102-1	South Fork Palouse River	SPRING	Idlers Rest Creek	40N	5W	21	NESE	Boise	Latah

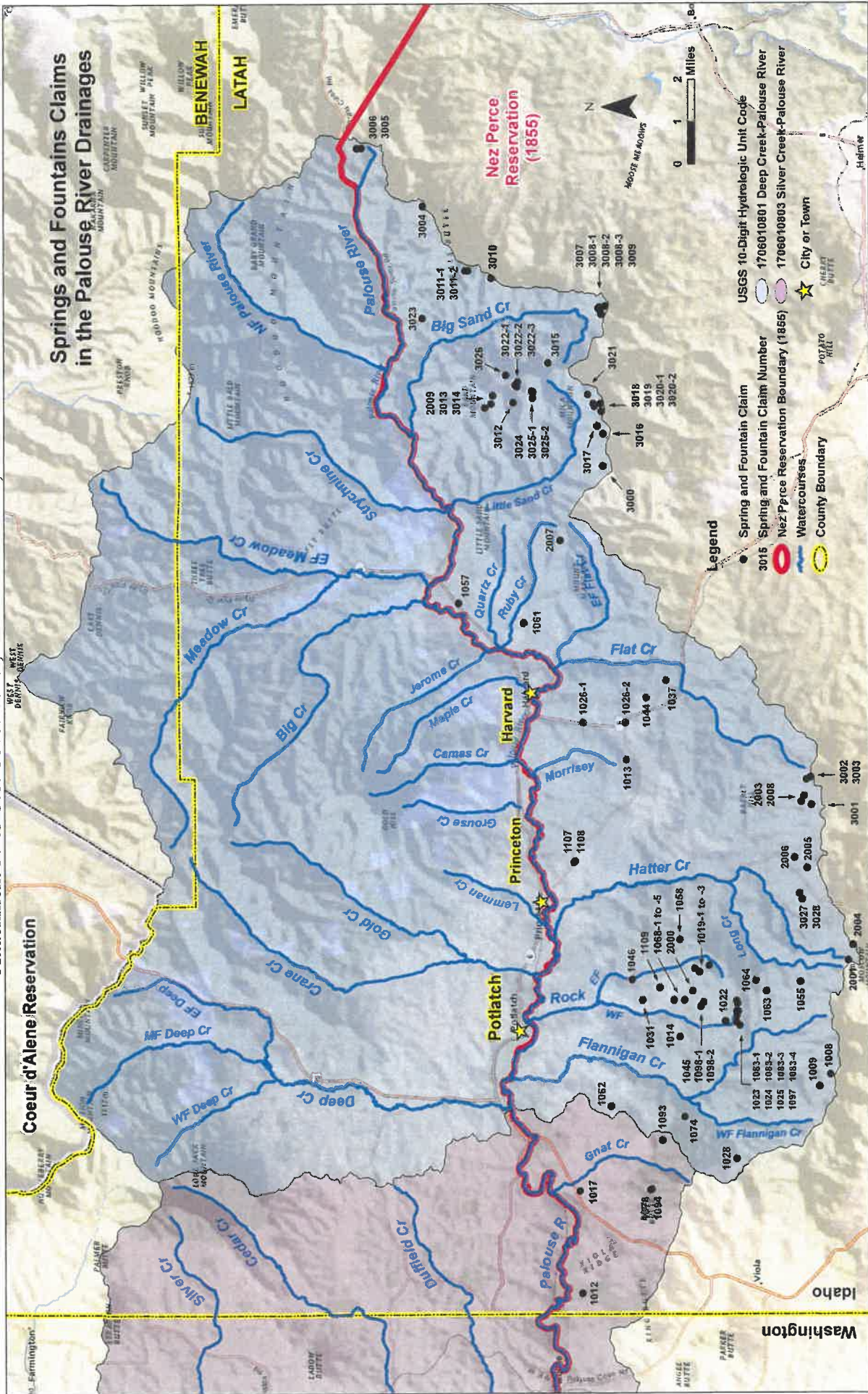
Claim No.	Multi-Source	Watershed	Source	Tributary To	Township	Range	Section	Q in the Q	Meridian	County
1103	1103-1	Union Flat Creek	SPRRNGS	Thorn Creek	37N	5W	4	NWNW	Boise	Latah
1103	1103-2	Union Flat Creek	SPRRNGS	Thorn Creek	37N	5W	4	NWNW	Boise	Latah
1103	1103-3	Union Flat Creek	SPRRNGS	Thorn Creek	37N	5W	4	NWNW	Boise	Latah
1104	1104-1	South Fork Palouse River	SPRRNG	South Fork Palouse River	39N	5W	18	NESW	Boise	Latah
1105	1105-1	South Fork Palouse River	Spring	Fourmile Creek	40N	5W	5	SWNE	Boise	Latah
1106	1106-1	South Fork Palouse River	SPRRNG	Gnat Creek	40N	5W	13	SESW	Boise	Latah
1107	1107-1	Deep Creek-Palouse River	SPRRNG	Palouse River	41N	4W	15	NENE	Boise	Latah
1108	1108-1	Deep Creek-Palouse River	SPRRNG	Palouse River	41N	4W	15	NENE	Boise	Latah
1109	1109-1	Deep Creek-Palouse River	SPRRNG	West Fork Rock Creek	41N	4W	30	NENE	Boise	Latah
1110	1110-1	South Fork Palouse River	SPRRNG	Fourmile Creek	40N	5W	18	NESW	Boise	Latah
2000	2000-1	Deep Creek-Palouse River	SPRRNG	West Fork Rock Creek	41N	4W	30	SESE	Boise	Latah
2001	2001-1	Deep Creek-Palouse River	SpringSeep	Hatter Creek	40N	4W	17	NWSE	Boise	Latah
2002	2002-1	South Fork Palouse River	SpringSeep	Fourmile Creek	40N	5W	9	SENE	Boise	Latah
2003	2003-1	Deep Creek-Palouse River	SpringSeep	Hatter Creek	40N	4W	12	SENW	Boise	Latah
2004	2004-1	Deep Creek-Palouse River	Spring	Hatter Creek	40N	4W	17	NESE	Boise	Latah
2005	2005-1	Deep Creek-Palouse River	Spring	Hatter Creek	40N	4W	10	NESE	Boise	Latah

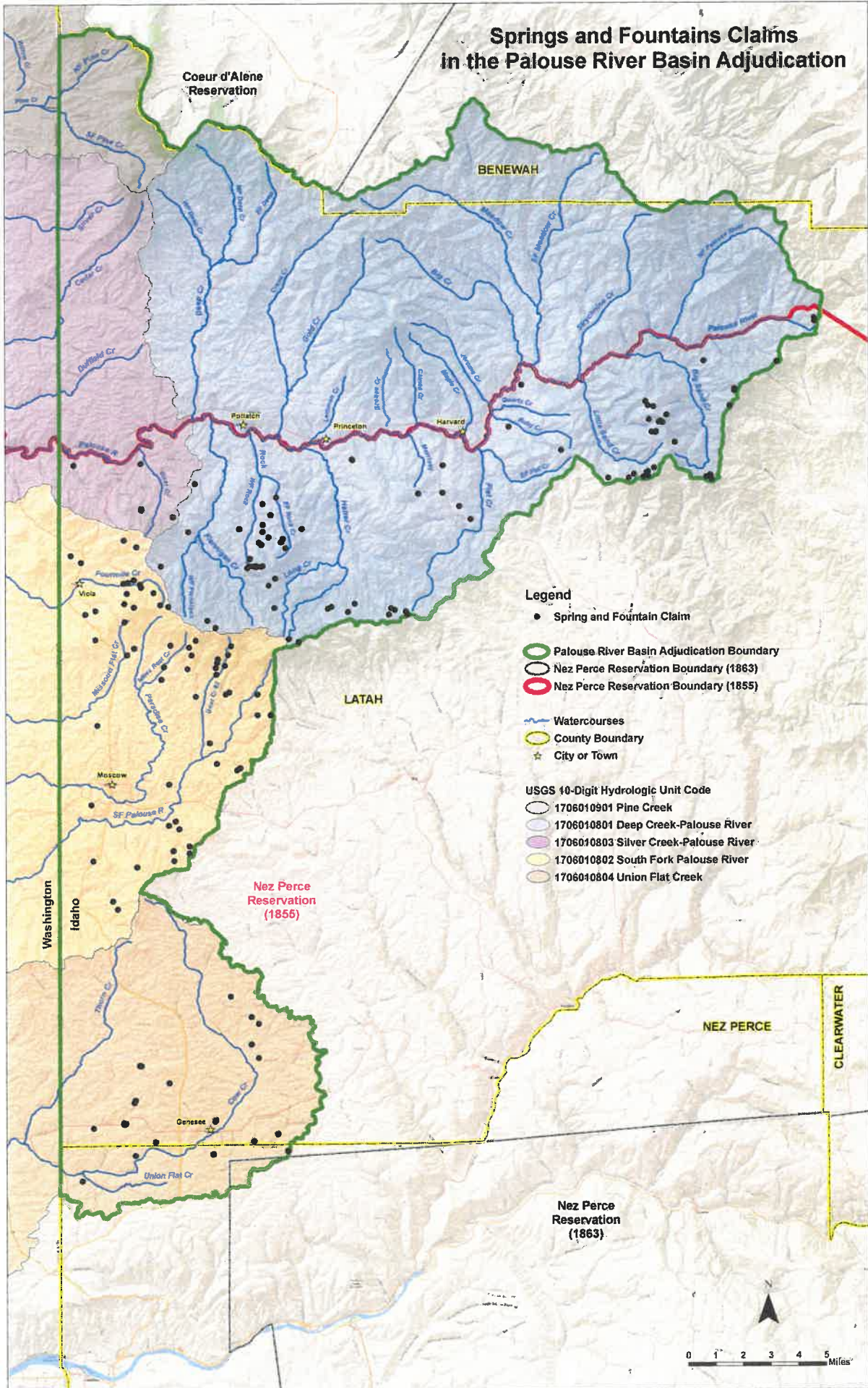
Claim No.	Multi-Source	Watershed	Source	Tributary To	Township	Range	Section	Q in the Q	Meridian	County
2006	2006-1	Deep Creek-Palouse River	Spring	Hatter Creek	40N	4W	11	SWNW	Boise	Latah
2007	2007-1	Deep Creek-Palouse River	Spring	Ruby Creek	41N	3W	13	NENE	Boise	Latah
2008	2008-1	Deep Creek-Palouse River	Spring	Hatter Creek	40N	4W	12	NESS	Boise	Latah
2009	2009-1	Deep Creek-Palouse River	Spring	Bonami Creek	41N	2W	3	SWNW	Boise	Latah
3000	3000-1	Deep Creek-Palouse River	Spring	Little Sand Creek	41N	2W	20	NWNE	Boise	Latah
3001	3001-1	Deep Creek-Palouse River	Spring	Hatter Creek	40N	4W	12	NWSW	Boise	Latah
3002	3002-1	Deep Creek-Palouse River	Spring	Hatter Creek	40N	4W	12	NESE	Boise	Latah
3003	3003-1	Deep Creek-Palouse River	Spring	Hatter Creek	40N	4W	12	NESE	Boise	Latah
3004	3004-1	Deep Creek-Palouse River	Spring	Johnson Creek	42N	1W	29	SWSE	Boise	Latah
3005	3005-1	Deep Creek-Palouse River	Spring	Palouse River	42N	1W	22	SWNW	Boise	Latah
3006	3006-1	Deep Creek-Palouse River	Spring	Palouse River	42N	1W	22	SWNW	Boise	Latah
3007	3007-1	Deep Creek-Palouse River	Spring	Big Sand Creek	41N	2W	24	NENW	Boise	Latah
3008	3008-1	Deep Creek-Palouse River	Spring	Big Sand Creek	41N	2W	13	SESW	Boise	Latah
3008	3008-2	Deep Creek-Palouse River	Spring	Big Sand Creek	41N	2W	13	SESW	Boise	Latah
3008	3008-3	Deep Creek-Palouse River	Spring	Big Sand Creek	41N	2W	24	NWNW	Boise	Latah
3009	3009-1	Deep Creek-Palouse River	Spring	Big Sand Creek	41N	2W	24	NWNW	Boise	Latah

Claim No.	Multi-Source	Watershed	Source	Tributary To	Township	Range	Section	Q in the Q	Meridian	County
3010	3010-1	Deep Creek-Palouse River	Spring	Ipsoot Creek	41N	1W	6	SW/NW	Boise	Latah
3011	3011-1	Deep Creek-Palouse River	Spring	Yakala Creek	42N	1W	31	SW/SW	Boise	Latah
3011	3011-2	Deep Creek-Palouse River	Spring	Yakala Creek	42N	1W	31	SW/SW	Boise	Latah
3012	3012-1	Deep Creek-Palouse River	Spring	Bonami Creek	41N	2W	3	SW/SW	Boise	Latah
3013	3013-1	Deep Creek-Palouse River	Spring	Bonami Creek	41N	2W	3	SW/NW	Boise	Latah
3014	3014-1	Deep Creek-Palouse River	Spring	Bonami Creek	41N	2W	4	SE/NE	Boise	Latah
3015	3015-1	Deep Creek-Palouse River	Spring	Triplet Creek	41N	2W	11	SW/SW	Boise	Latah
3016	3016-1	Deep Creek-Palouse River	Spring	Little Sand Creek	41N	2W	21	NENW	Boise	Latah
3017	3017-1	Deep Creek-Palouse River	Spring	Little Sand Creek	41N	2W	16	SWSE	Boise	Latah
3018	3018-1	Deep Creek-Palouse River	Spring	Little Sand Creek	41N	2W	21	NENE	Boise	Latah
3019	3019-1	Deep Creek-Palouse River	Spring	Little Sand Creek	41N	2W	22	NW/NW	Boise	Latah
3020	3020-1	Deep Creek-Palouse River	Spring	Little Sand Creek	41N	2W	16	SESE	Boise	Latah
3020	3020-2	Deep Creek-Palouse River	Spring	Little Sand Creek	41N	2W	15	SWSW	Boise	Latah
3021	3021-1	Deep Creek-Palouse River	Spring	Little Sand Creek	41N	2W	15	NE/SW	Boise	Latah
3022	3022-1	Deep Creek-Palouse River	Spring	Bonami Creek	41N	2W	10	NW/NE	Boise	Latah
3022	3022-2	Deep Creek-Palouse River	Spring	Bonami Creek	41N	2W	3	SE/SW	Boise	Latah

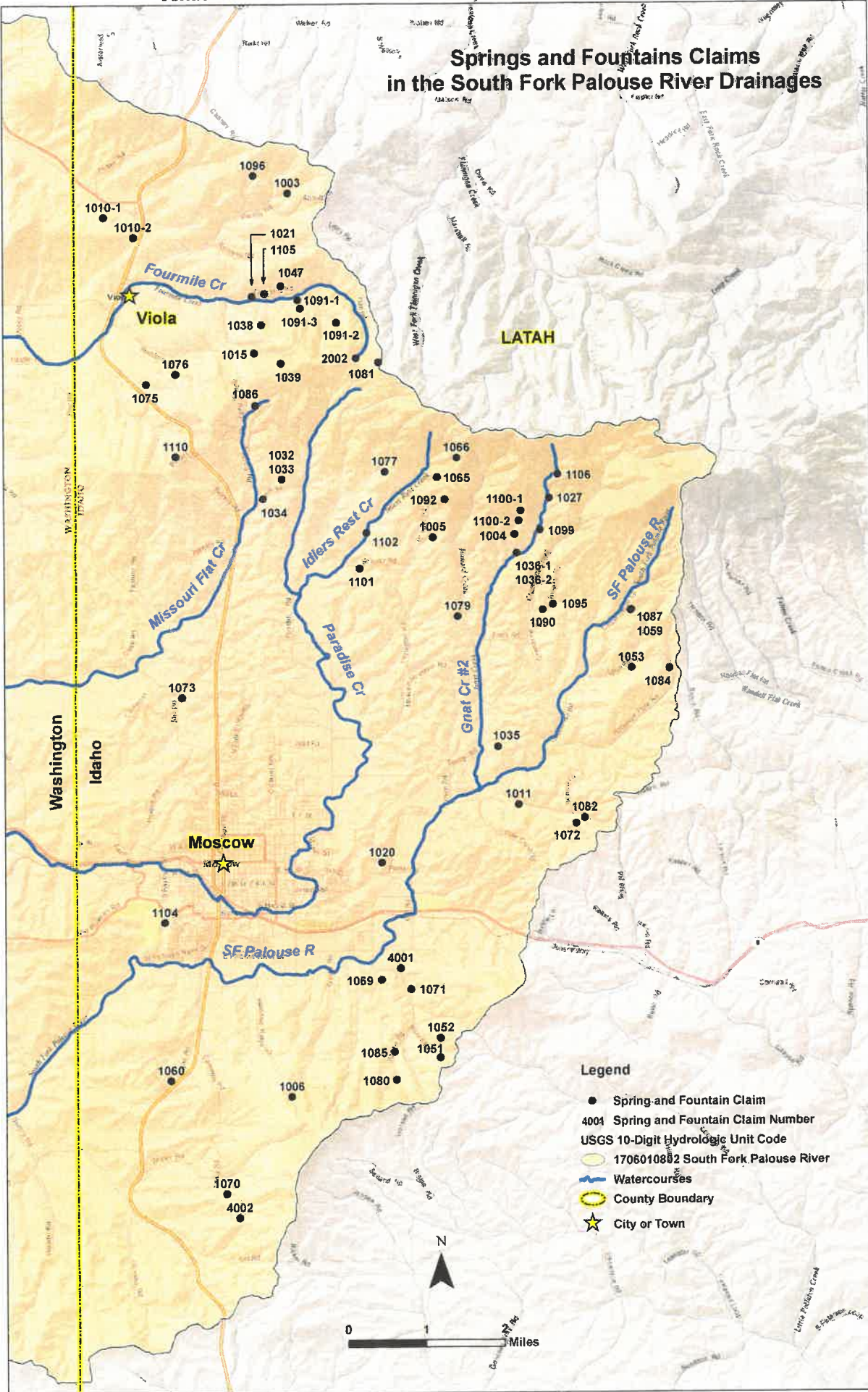
Claim No.	Multi-Source	Watershed	Source	Tributary To	Township	Range	Section	Q in the Q	Meridian	County
3022	3022-3	Deep Creek-Palouse River	Spring	Bonanni Creek	41N	2W	10	NENW	Boise	Latah
3023	3023-1	Deep Creek-Palouse River	Spring	Big Sand Creek	42N	2W	25	SWSW	Boise	Latah
3024	3024-1	Deep Creek-Palouse River	Spring	Bonanni Creek	41N	2W	10	SWNW	Boise	Latah
3025	3025-1	Deep Creek-Palouse River	Spring	Bonanni Creek	41N	2W	10	SENW	Boise	Latah
3025	3025-2	Deep Creek-Palouse River	Spring	Bonanni Creek	41N	2W	10	SENW	Boise	Latah
3026	3026-1	Deep Creek-Palouse River	Spring	Dual Creek	41N	2W	3	SWSE	Boise	Latah
3027	3027-1	Deep Creek-Palouse River	Spring	Hatter Creek	40N	4W	10	SWNW	Boise	Latah
3028	3028-1	Deep Creek-Palouse River	Spring	Hatter Creek	40N	4W	10	SWNW	Boise	Latah
4001	4001-1	South Fork Palouse River	Spring	South Fork Palouse River	39N	5W	22	NENW	Boise	Latah
4002	4002-1	South Fork Palouse River	Spring	South Fork Palouse River	38N	5W	5	SENW	Boise	Latah

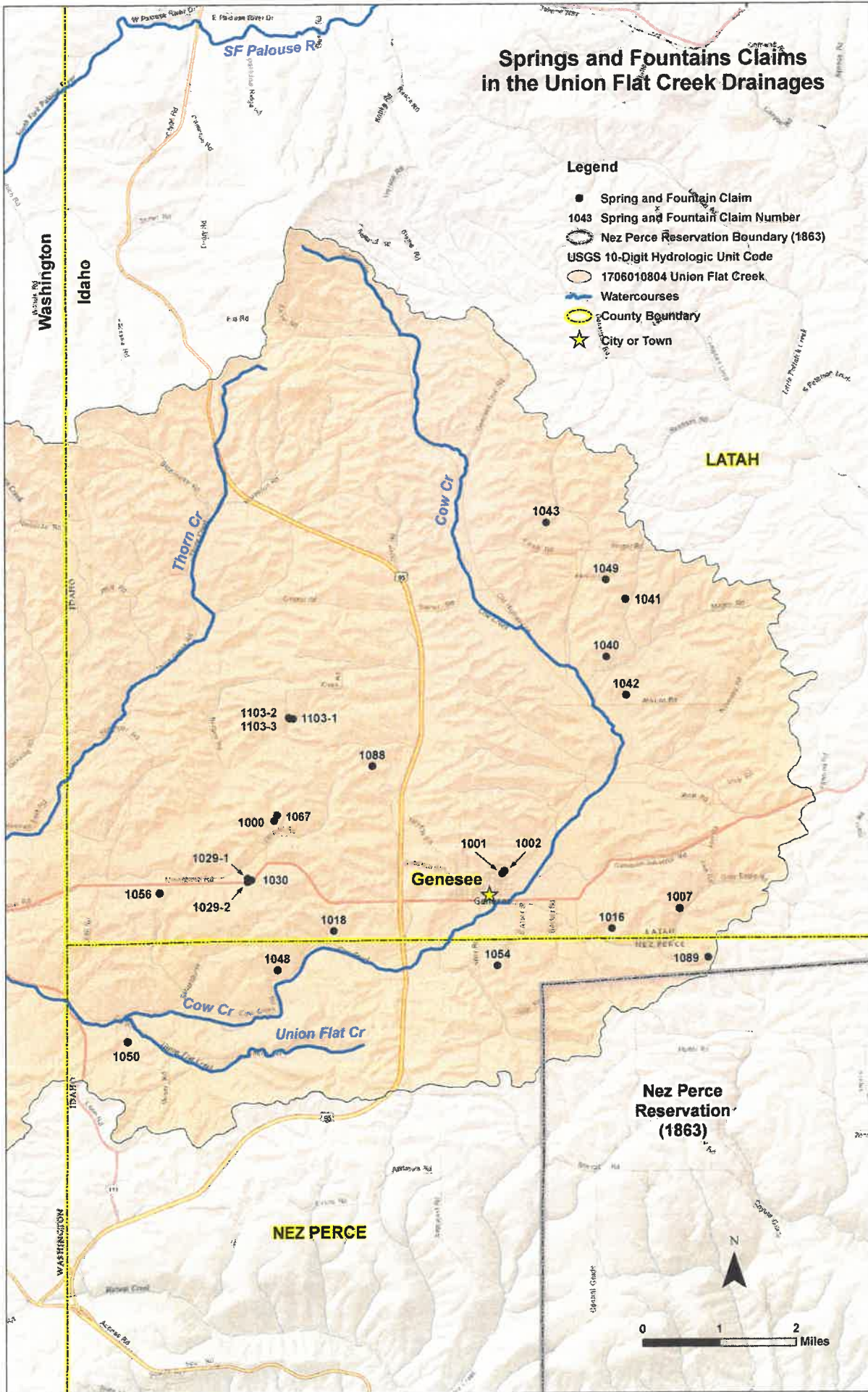






### Springs and Fountains Claims in the South Fork Palouse River Drainages





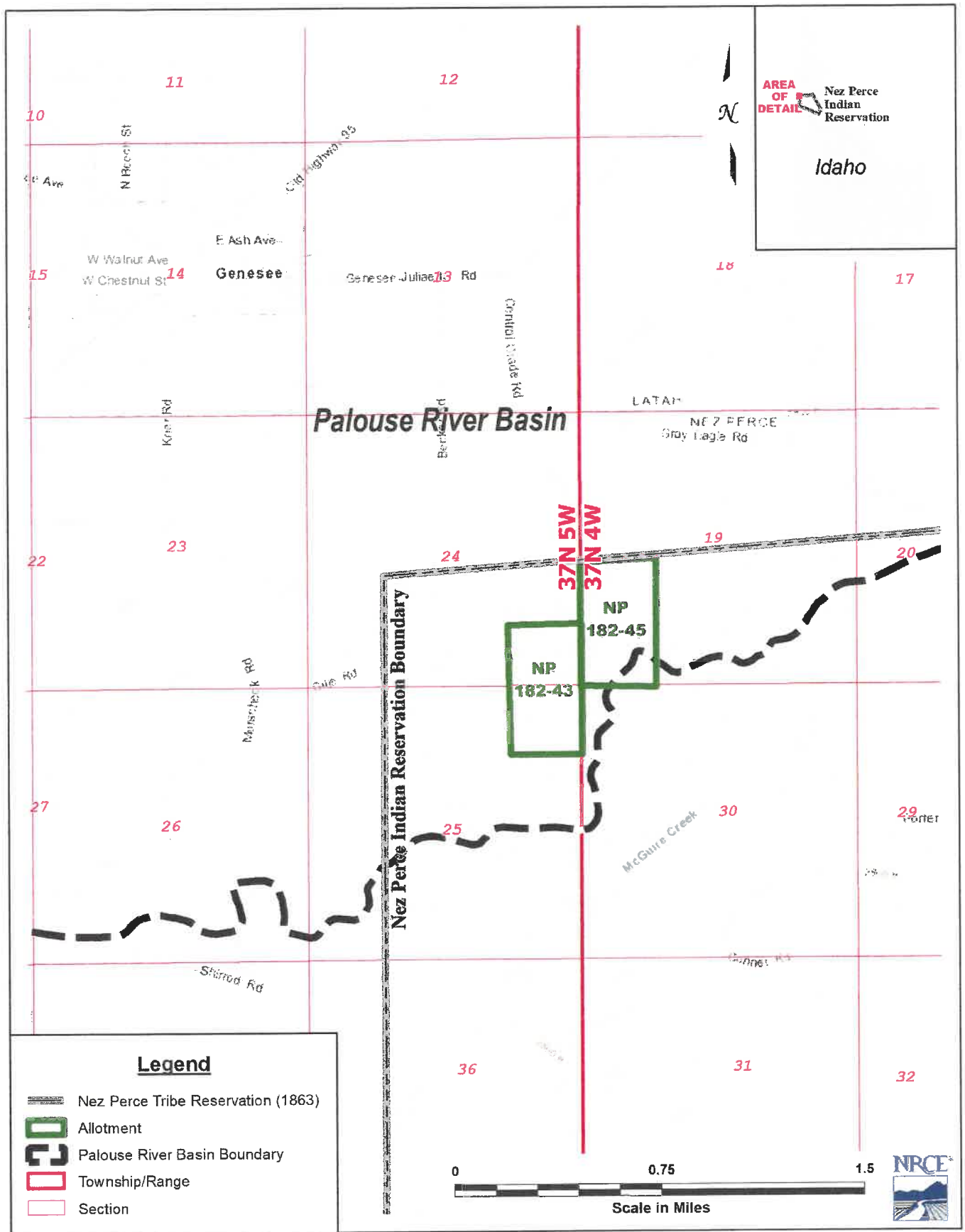


Figure 1: Overview of Nez Perce Allotments in the Palouse River Basin Adjudication.

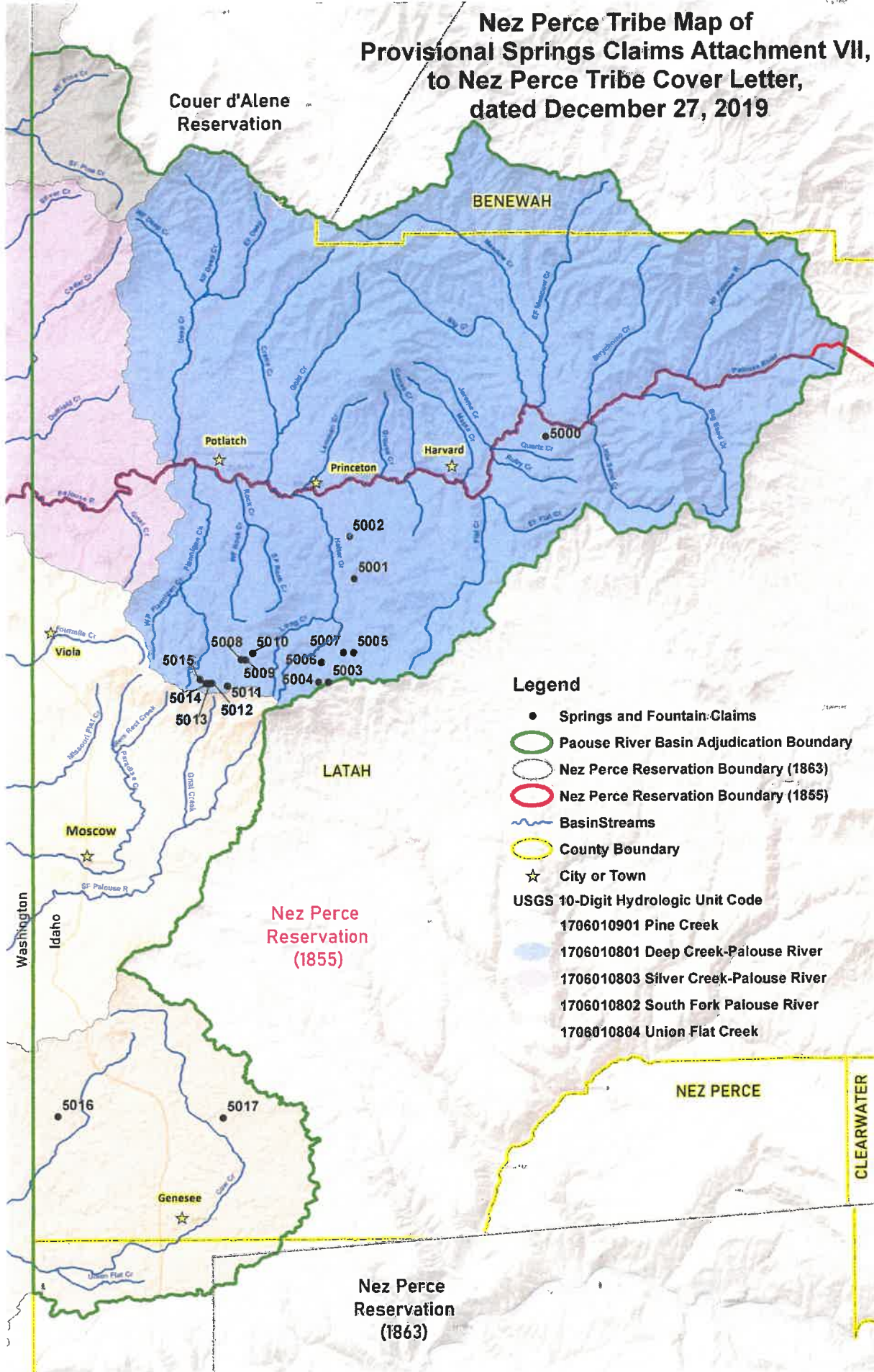


Summary of Nez Perce Tribal Provisional Springs Claims  
 Attachment VI, to Nez Perce Tribe Cover Letter, dated December 27, 2019.

Claim No.	Multi-Source	Watershed	Source	Tributary To	Township	Range	Section	Q in the Q		Meridian	County
								Q	in the Q		
5000	5000-1	Deep Creek-Palouse River	Spring	Sinks	42N	02W	36	SWSW		Boise	Latah
5001	5001-1	Deep Creek-Palouse River	Spring	Hatter Creek	41N	04W	26	SWNW		Boise	Latah
5002	5002-1	Deep Creek-Palouse River	Spring	Hatter Creek	41N	04W	23	NWNW		Boise	Latah
5003	5003-1	Deep Creek-Palouse River	Spring	Hatter Creek	40N	04W	15	NENW		Boise	Latah
5004	5004-1	Deep Creek-Palouse River	Spring	Hatter Creek	40N	04W	16	NENE		Boise	Latah
5005	5005-1	Deep Creek-Palouse River	Spring	Hatter Creek	40N	04W	11	NWNW		Boise	Latah
5006	5006-1	Deep Creek-Palouse River	Spring	Hatter Creek	40N	04W	10	SWNW		Boise	Latah
5007	5007-1	Deep Creek-Palouse River	Spring	Hatter Creek	40N	04W	10	NENE		Boise	Latah
5008	5008-1	Deep Creek-Palouse River	Spring	Flannigan Creek	40N	04W	7	NENW		Boise	Latah
5009	5009-1	Deep Creek-Palouse River	Spring	Flannigan Creek	40N	04W	7	NENW		Boise	Latah
5010	5010-1	Deep Creek-Palouse River	Spring	Flannigan Creek	40N	04W	7	NWNE		Boise	Latah
5011	5011-1	Deep Creek-Palouse River	Spring	Flannigan Creek	40N	05W	13	NENE		Boise	Latah
5012	5012-1	Deep Creek-Palouse River	Spring	Flannigan Creek	40N	05W	13	NENW		Boise	Latah
5013	5013-1	Deep Creek-Palouse River	Spring	Flannigan Creek	40N	05W	13	NWNW		Boise	Latah
5014	5014-1	Deep Creek-Palouse River	Spring	Flannigan Creek	40N	05W	13	NWNW		Boise	Latah
5015	5015-1	Deep Creek-Palouse River	Spring	Flannigan Creek	40N	05W	11	SESE Lot 4		Boise	Latah
5016	5016-1	Union Flat Creek	Spring	Thorn Creek	38N	05W	30	SESW		Boise	Latah
5017	5017-1	Union Flat Creek	Spring	Cow Creek	38N	05W	25	SWSE		Boise	Latah

1214  
1265  
1216  
1217  
1218  
1219  
1215  
1272  
1273  
1274  
1275  
1276

**Nez Perce Tribe Map of  
Provisional Springs Claims Attachment VII,  
to Nez Perce Tribe Cover Letter,  
dated December 27, 2019**



**Legend**

- Springs and Fountain-Claims
- Paouse River Basin Adjudication Boundary
- Nez Perce Reservation Boundary (1863)
- Nez Perce Reservation Boundary (1855)
- ~ BasinStreams
- County Boundary
- ☆ City or Town
- USGS 10-Digit Hydrologic Unit Code
  - 1706010901 Pine Creek
  - 1706010801 Deep Creek-Palouse River
  - 1706010803 Silver Creek-Palouse River
  - 1706010802 South Fork Palouse River
  - 1706010804 Union Flat Creek